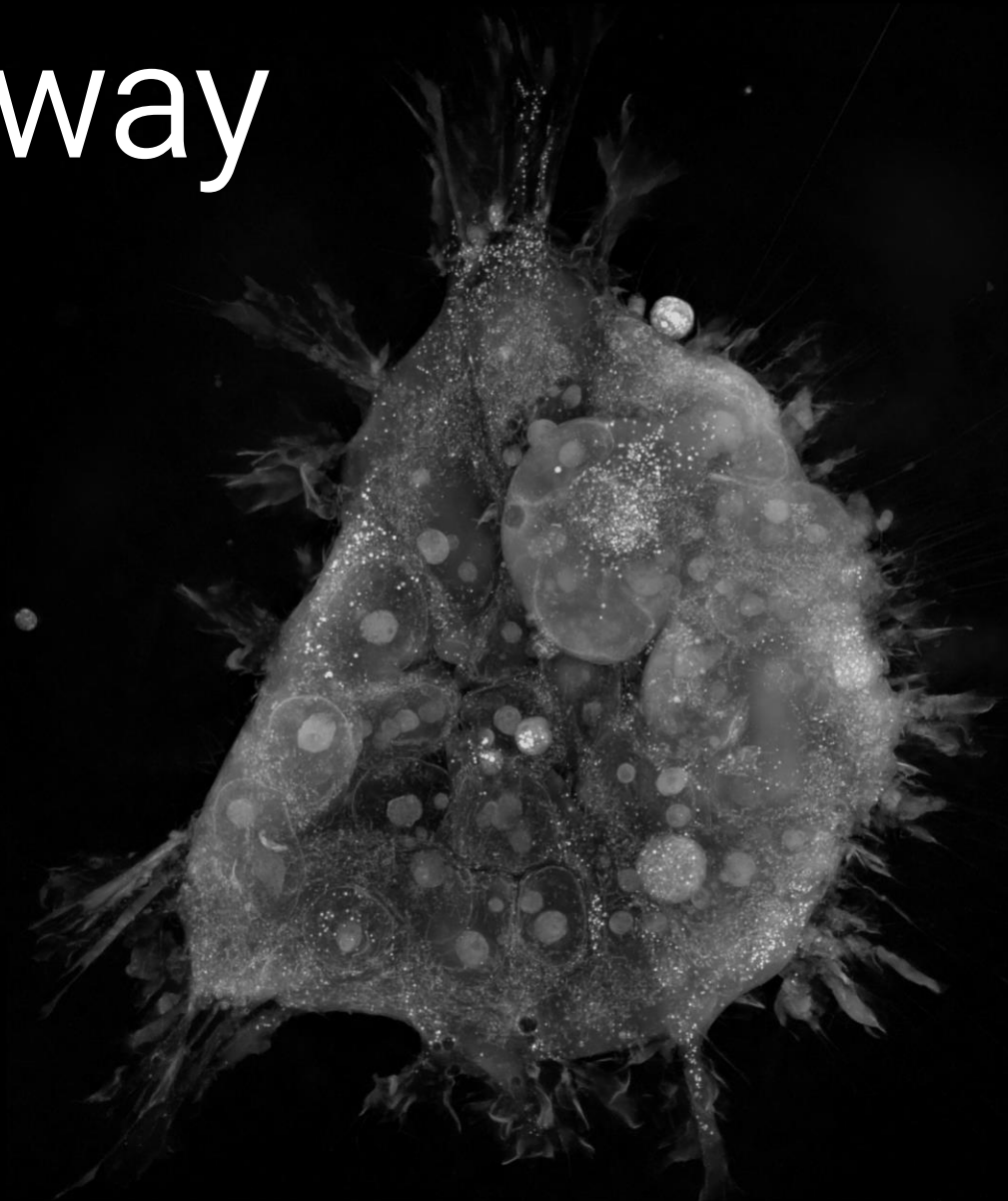

Innovate the way we see life



Tomocube



Disclaimer

This material has been prepared by Tomocube, Inc. (“the Company”) for informational purposes in investor presentations. The forward-looking statements contained herein have not been independently verified. These statements relate to future events and include the Company’s expectations regarding its future operational and financial performance. Terms such as “expected,” “prospects,” “plans,” “anticipated,” “(E),” and similar expressions indicate such forward-looking content.

These forward-looking statements are subject to uncertainties arising from changes in the business environment, and actual performance may differ materially from what is described herein. Such outlooks are based on the Company’s current circumstances and strategies as of the date of this presentation and may change without prior notice due to market conditions or internal decisions.

The Company and its employees assume no responsibility or liability, including negligence or otherwise, for any loss arising from the use of this material. This document does not constitute an offer to purchase, sell, or subscribe for any securities and should not form the basis of any investment decision or agreement.

Investors should base their investment decisions solely on the Company’s official public filings with the Financial Supervisory Service.

This material may be used for non-commercial purposes without alteration, provided that the source is properly cited. However, unauthorized distribution or reproduction of modified content without prior approval from the Company may be subject to legal consequences.

Table of contents

Prologue

Chapter 1. Why Holotomography(HT)

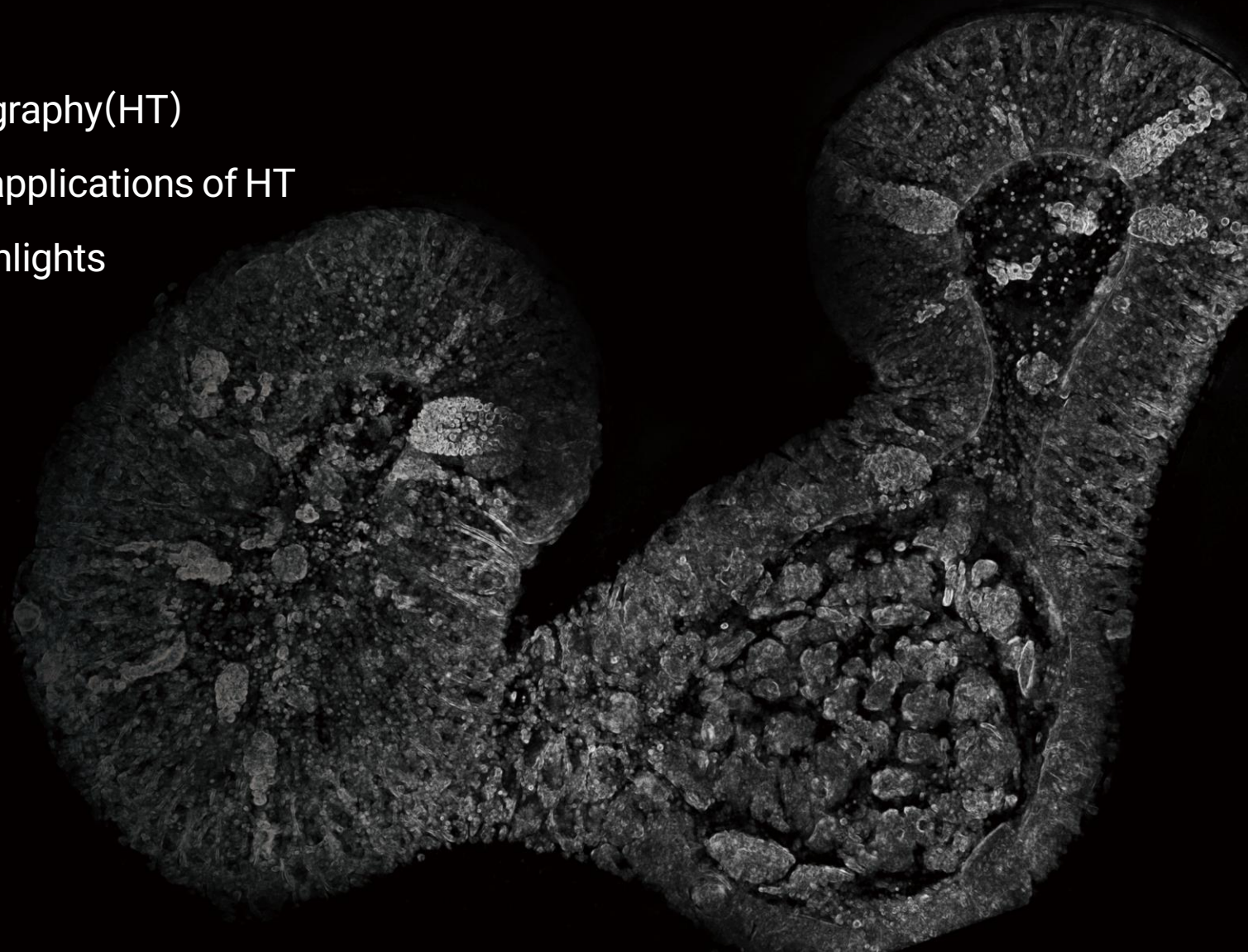
Chapter 2. Expanding the applications of HT

Chapter 3. Investment Highlights

Appendix



Tomocube



Paradigm Shift in Cell Analysis

- Growth drivers: 3D Biology & Regenerative Medicine



Core: 3D label-free measurement & AI-enabled analysis of living cells, tissues, and organoids



Holotomography: Real-time, high-resolution, label-free 3D analysis of live cells

Unmet Needs Addressed by Holotomography

- Fulfilling Unmet Needs in the Advanced Biomedical Sector

Conventional

Fluorescence Reagent (1-3 days)

Cells → Apoptosis → Fluorescence-based imaging → Subjective Analysis (*Not standardized*) → Unsuitable for therapeutic application

Mitigates cell damage and deformation from fluorescent dyes

>1000 slices

Typically, cells must be fixed, sectioned, and stained for structural observation

Unsuitable for therapeutic application

Impossible to conduct long term live cell analysis

VS

HT ("Holotomography")

Label-free cell analysis → Automated quantitative analysis → Applicable for therapeutic purposes

Cell

Label free imaging and cell analysis without any cell damage or loss

Applicable for therapeutic purposes

Long-term 3D observation of live cells possible

Transformative Effects

Exclusive solution for Cell biology & Regenerative medicine

Sample preprocessing **Not Required**

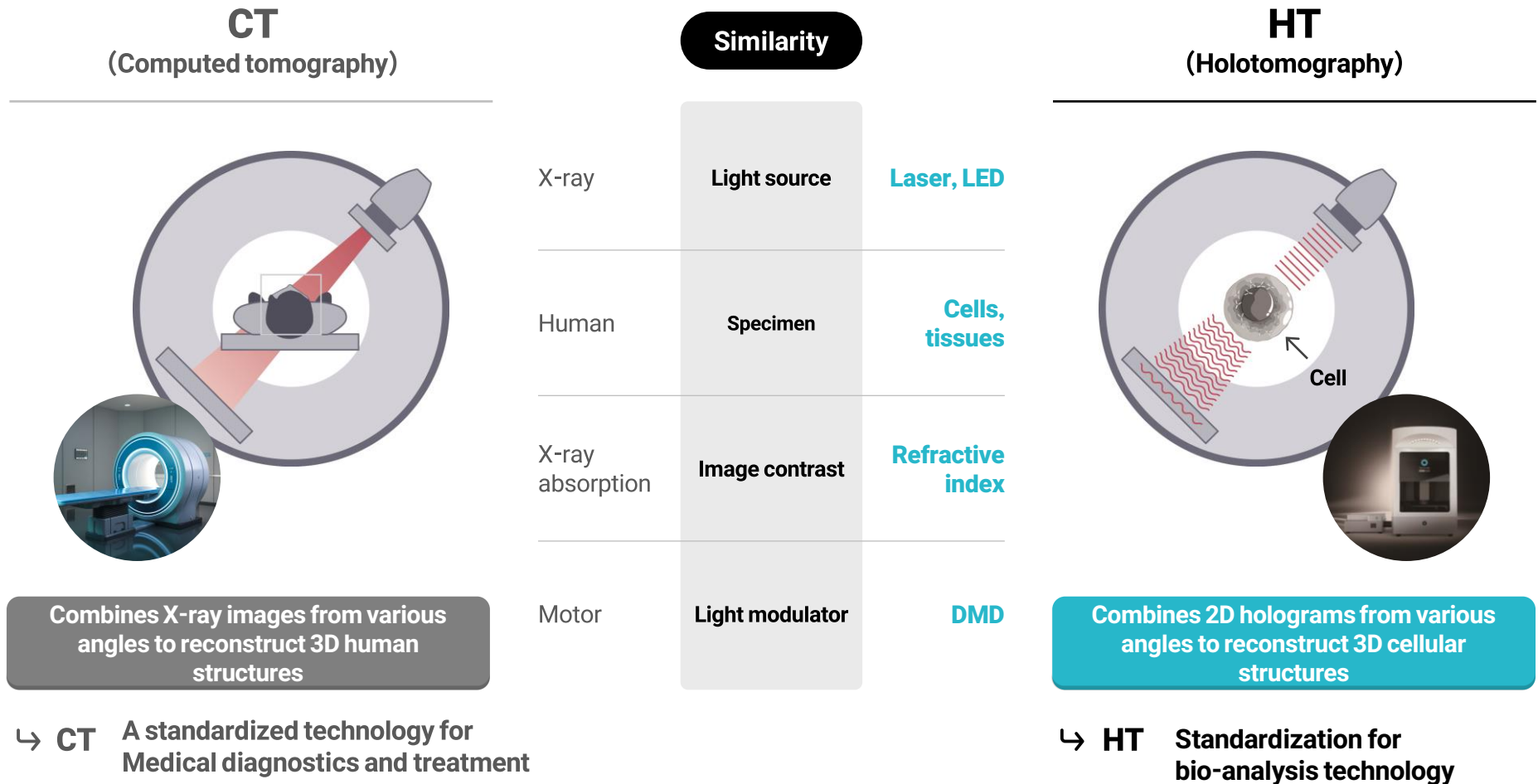
Label-free 3D imaging analysis **First in Class**

Unlimited, prolonged cell analysis **First in Class**

Measurable sample thickness ↑ **5x**

Setting new standards in cell analysis through Holotomography

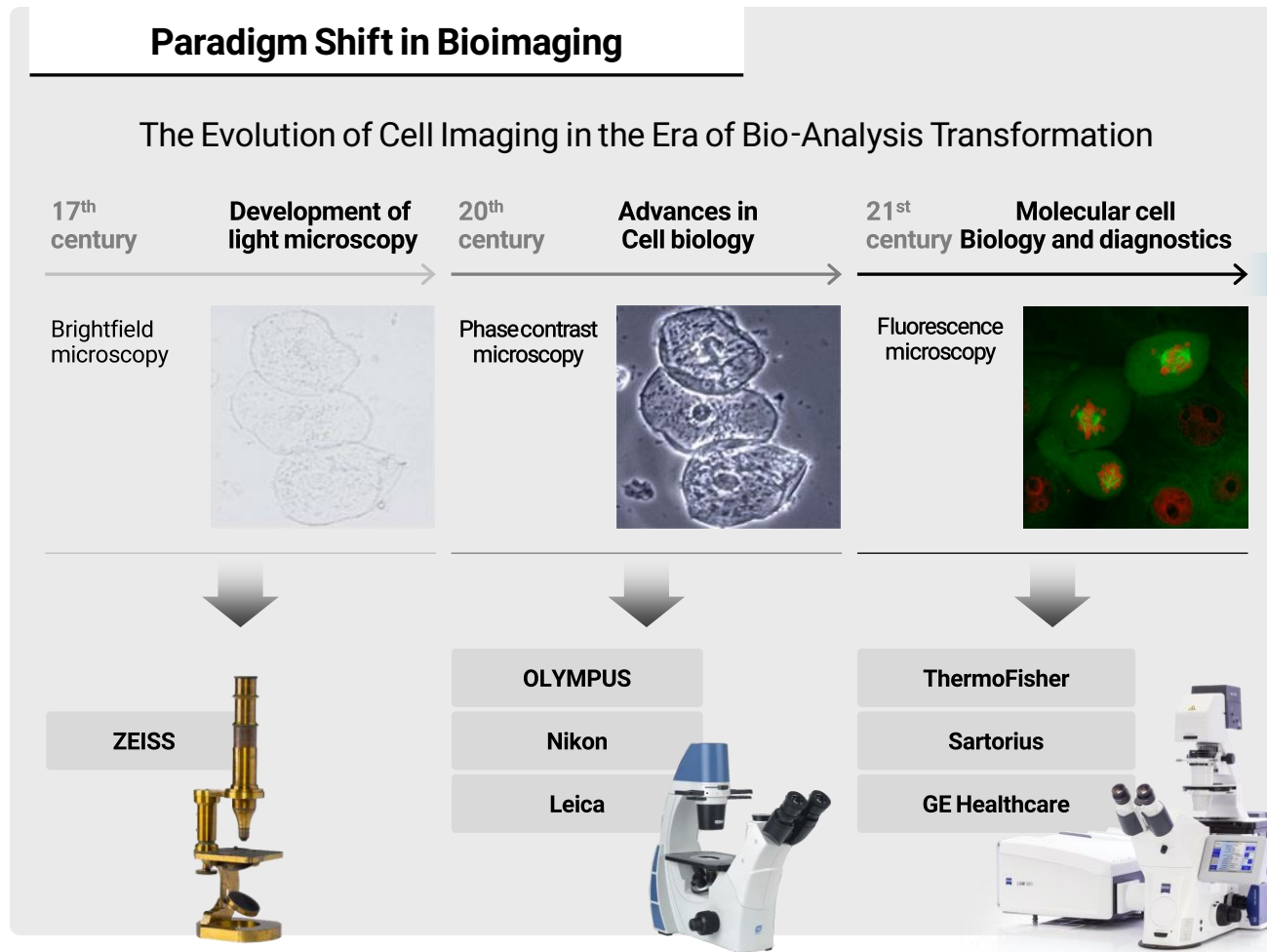
•• Just as CT Transformed Diagnosis, HT is Poised to Transform Bioanalysis



* DMD (Digital Micromirror Device)

Leading Advanced Bio/Medical Industry

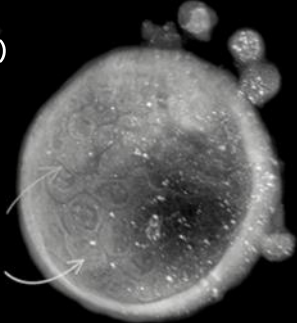
- Pioneering Holotomography: From Innovation to Global Commercialization





3D Biology & Regenerative Medicine

3D Cell Structure Measurement & Analysis

Holotomography
(Korea, 2015 - Present)



“ Major Developer of ”
Holotomography Technology

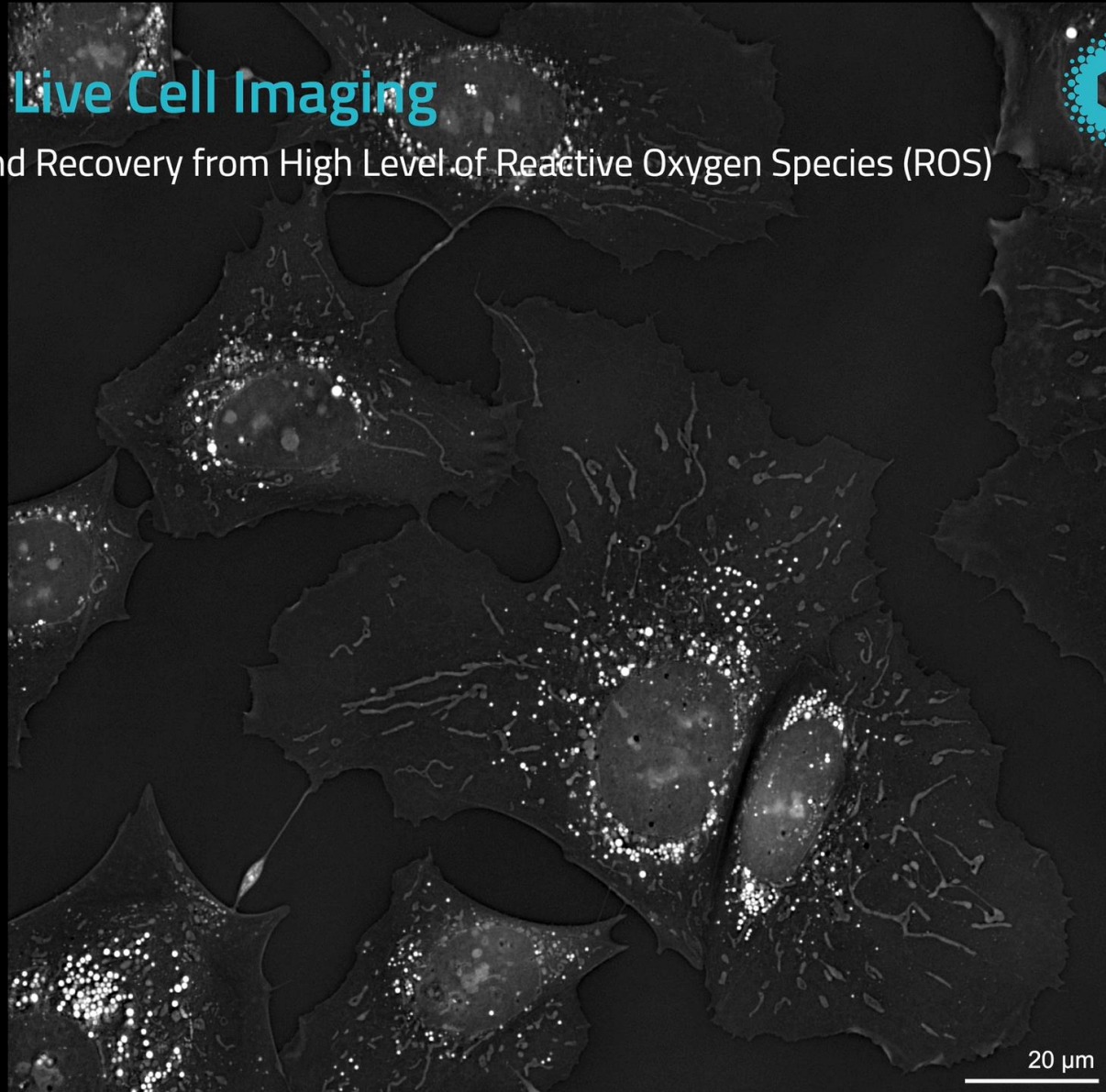



Label-free 3D Live Cell Imaging

Cellular Responses and Recovery from High Level of Reactive Oxygen Species (ROS)



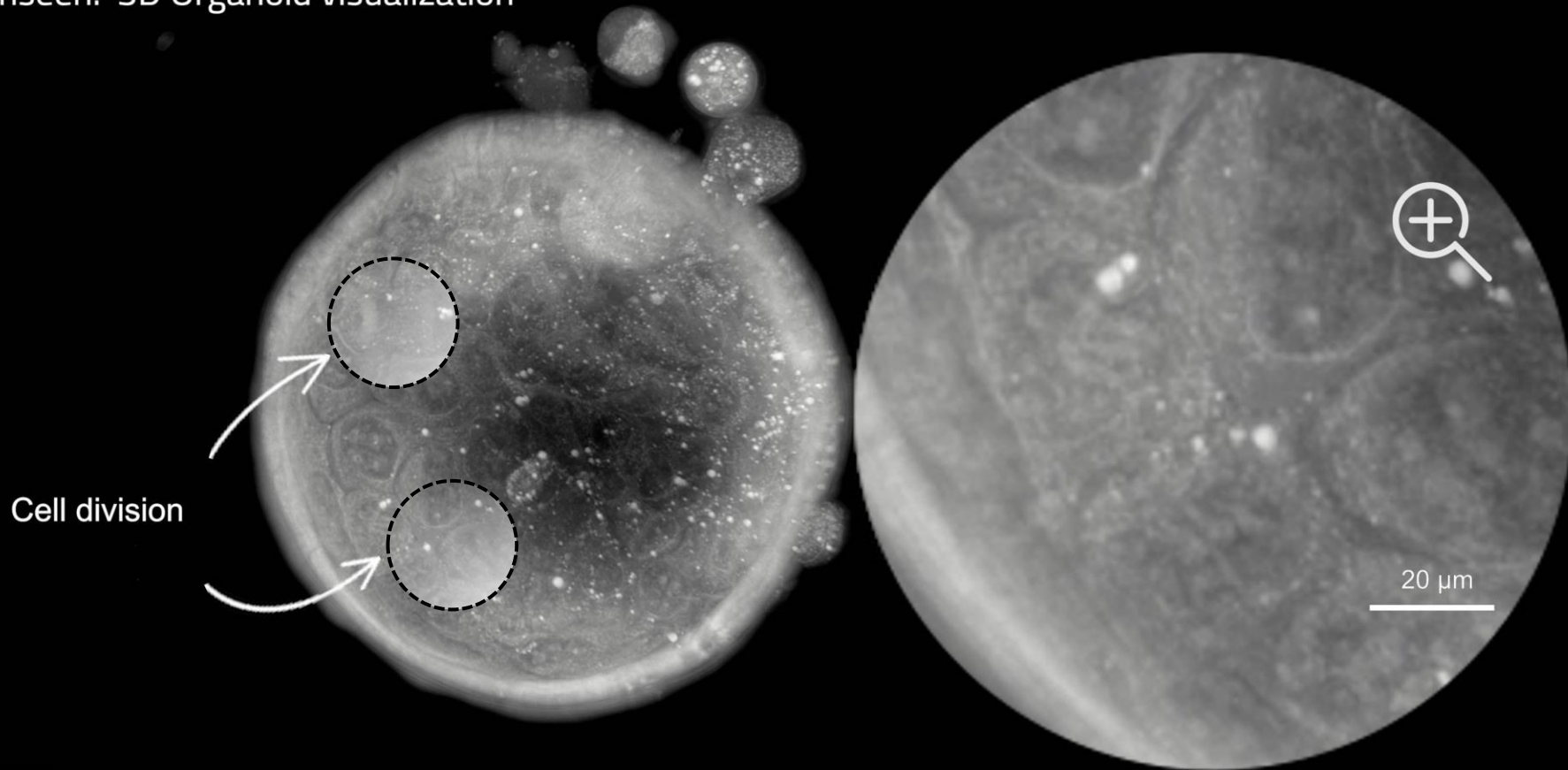
Tomocube



- Cell line: Hep3B
- Microscope: HT-X1
- Observation duration: 4.5 hr
- Time interval: 20 sec
- Chip: ibidi μ -Slide 1 Luer
- Flow rate: 0.23 μ L/min

Label-free 3D live cell imaging

Unveiling the unseen: 3D Organoid visualization



Chapter 1.

Why Holotomography (HT)

01. Key Advantages of Holotomography

02. HT Platform (1) Hardware

(2) Software

(3) AI

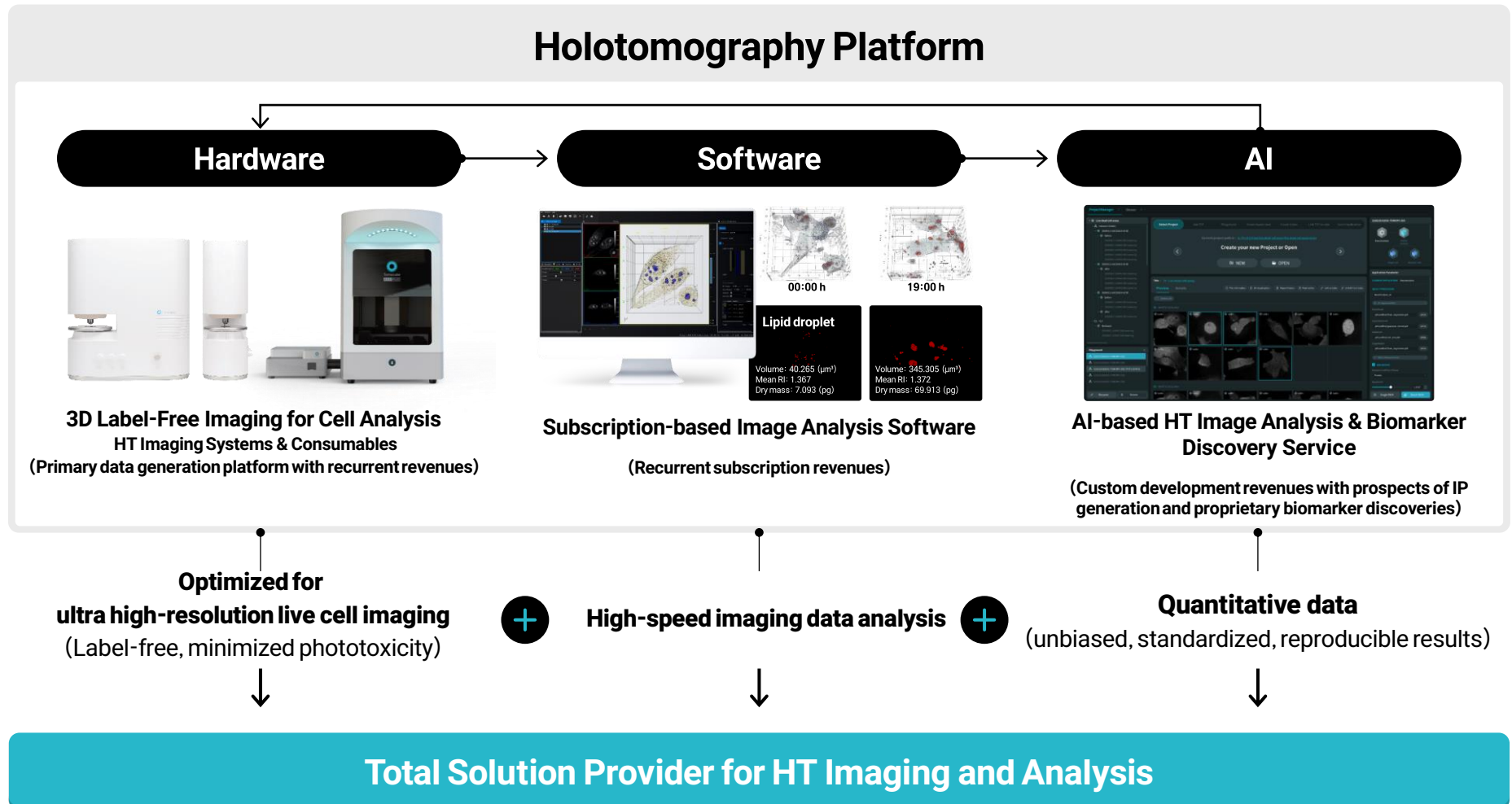
03. Distinct Competitive Advantages (1) Holotomography Comparison

(2) Cell Analysis Technology Comparison

04. Externally Validated Technology

01. Key Advantages of Holotomography

- Establishing a Competitive Business Model Through Proprietary Hardware, Software, and AI solutions

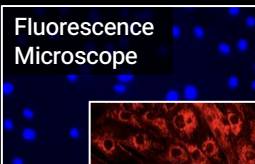


02. HT Platform (1) Hardware

- Establishing a Standard Protocol for 3D Label-Free Imaging

Unmet Needs

Limitations of Labeling



Fluorescent Excitation Induces Phototoxicity, Causing Cellular Damage and Functional Alteration

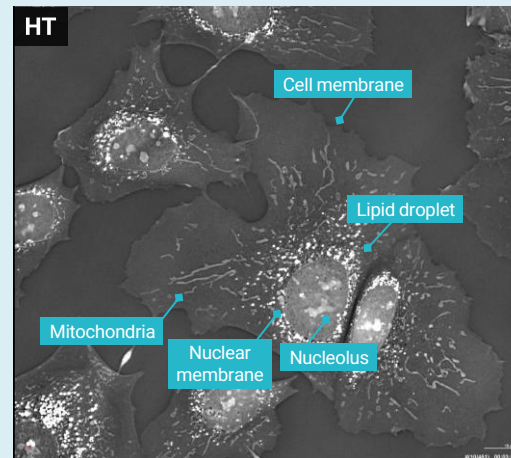
Limitations of 2D cell analysis



Challenging to Analyze Complex 3D Cellular Structures, Leading to Reduced Accuracy and Reliability

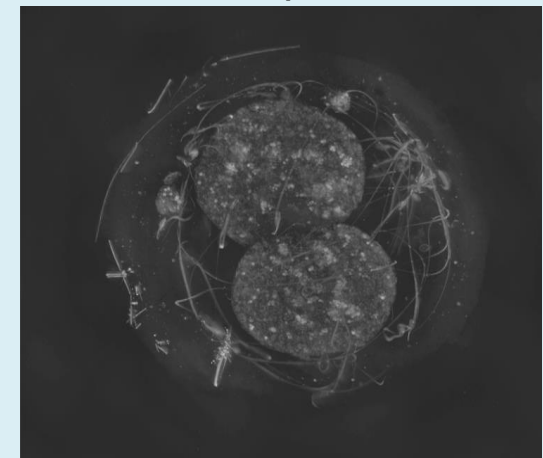
Hardware Competencies

Enables Observation of Cells in Their Native State Without Compromising Viability or Function



Observes intracellular organelles Label-free, based on precise refractive index measurement

Accurate 3D Cellular Analysis of Thick Tissues, Organoids, and Complex Samples



No sectioning for thick tissues (<math>< 150 \mu\text{m}</math>)

Allows comprehensive structural analysis of entire cells

Maximizes cell survival with minimal structural impact

Enables extended cell imaging over time

02. HT Platform (2) Software

- From Custom Solutions to an Integrated Analysis Platform

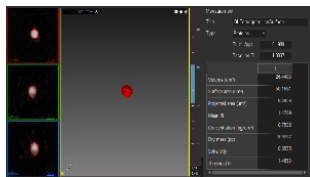
Software Competencies



Demand-Based Solution Development

2017

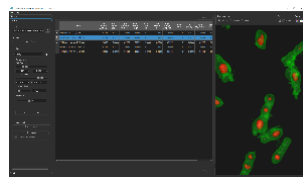
TomoStudio



Visualization of 3D HT data and single-cell analysis

2019

Lipid Analysis

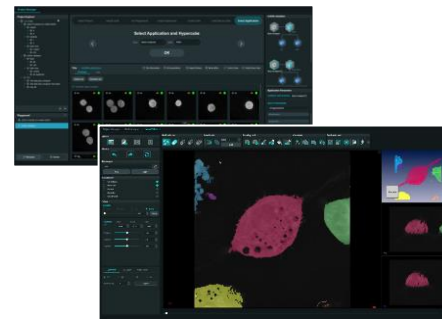


Targeted analysis optimized for specific conditions

“ Expanded application areas through AI model-based software ”

2022

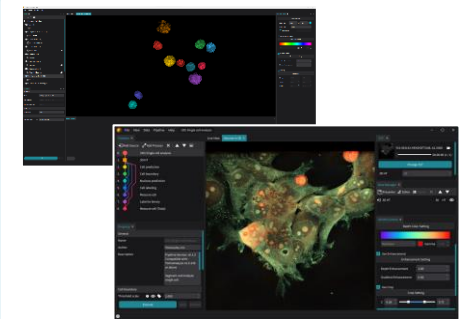
TomoAnalysis 1.0



- AI Model-Based Cell Organelle Analysis
- Rule-based multi cell analysis
- Applying uniform logics to big data

2024

TomoAnalysis 2.0



- Real-Time 3D Visualization
- Manageable Analysis Logic System
 - 120 Rule-based modules
 - 7 AI-based modules
- 33 Application-Specific Algorithms

AI-based software for cell and organelle analysis

02. HT Platform (3) AI

- World-Leading AI-Powered Analysis Platform for HT Imaging and Biomarker Discovery

01

Quality Improvement via AI

Maximizing HT imaging definition & reconstruction speed

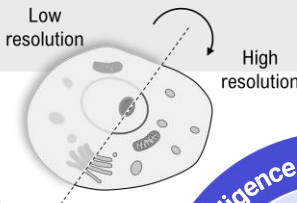
Up to 10x

Reconstruction speed improvement

Up to 2x

Definition

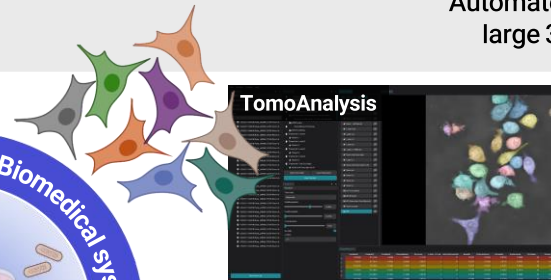
Solving laser speckle, Low SNR



02

Automated Cell/Organelle Segmentation

Automated quantitative analysis of large 3D images captured by HT

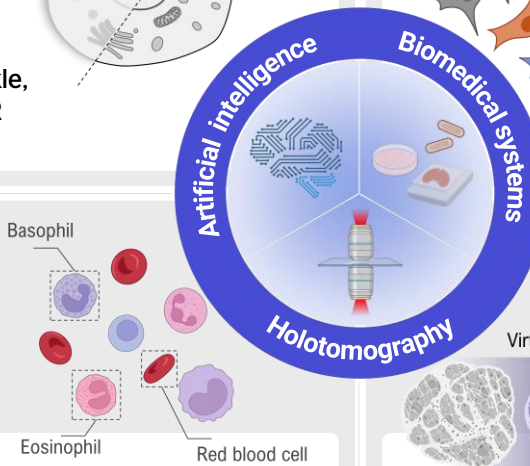



Machine Learning
+
Deep Learning
+
Code-less

03


Label-Free Cell Type & State Differentiation

Differentiates types and states of label-free cells using AI





Sepsis



19 bacteria types

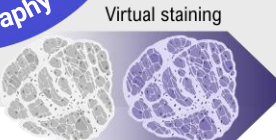
99.9%

Accuracy rate powered by AI analysis²

04

Virtual digital staining technology

Simulated staining extracted from HT images of non-stained cells




97%

Extraction accuracy for 3D digital dyes³

+ 6 channels

of simultaneous 3D dye extraction



Exceeding Google AI and Allen Institute's capabilities

Reference 1 : J. Park et al., *Nature Methods* 20, 1645 (2023)

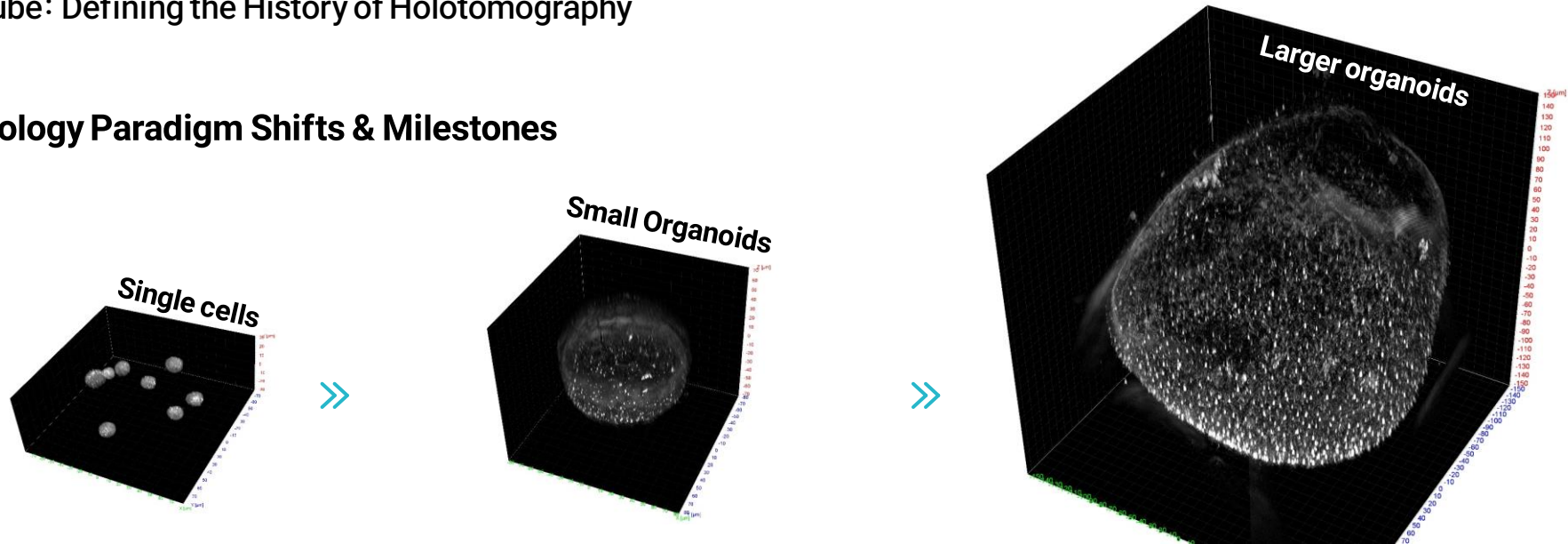
Reference 2 : G. Kim et al., *Light: Science & Applications* 11, 190 (2022)

Reference 3 : Y. Jo et al., *Nature Cell biology* 23, 1329 (2021)

03. Distinct Competitive Advantages: Holotomography Comparison

- Tomocube: Defining the History of Holotomography

HT Technology Paradigm Shifts & Milestones

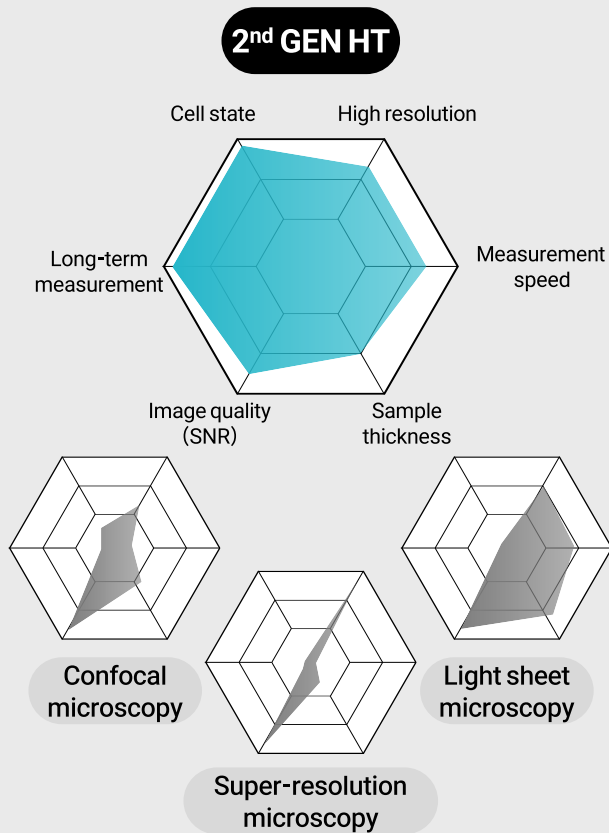


	1 st Generation	2 nd Generation	Future
Category	1 st Gen HT (Competitor)	2 nd Gen HT (Tomocube)	Future HT (Tomocube)
Model	3D Explorer	HT-X1 (2022 2H) / HT-X1 Plus (2024 2H) / HT-X1 mini (2025 2H)	HT-X1 Max (Planned 2026; currently under client testing)
Pros	High resolution	High resolution & SNR (Signal to Noise Ratio) System stability with quantitative measurement	2x + a depth improvement from previous models Able to scan thicker organoids
Cons	Unstable, 3D measurement only for monolayered cell	Increased capital expenditure (excluding mini)	-
Maximum resolution	250 nm	150 nm	124 nm
Depth	30 μm	150 μm	Max 500 μm
Light source	Laser	LED (single wavelength)	LED (Multiple wavelengths)

03. Distinct Competitive Advantages: Cell Analysis Technology Comparison

- Setting the Benchmark in Cell Analysis: Tomocube vs. Competitors

Necessary Specs

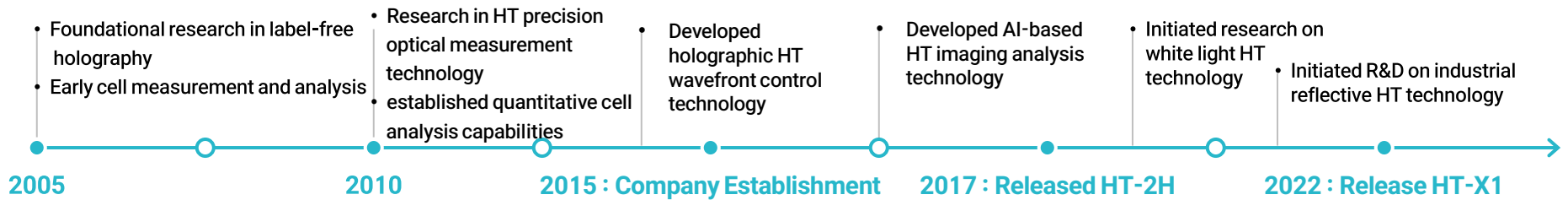


Comparison with Other Optical Devices

Category	3D Imaging	Resolution	Multimodal Imaging	Thickness	Label-free	Quantitative	Artificial Intelligence
Tomocube (Korea) HT (2nd Gen)	●	●	●	●	●	●	●
S**** (Germany) Bright-field microscopy			○		△	△	
S**** (Japan) Optical coherence tomography	○			○	○		
N**** (Japan) Confocal microscopy	○	○	○	△			
Z**** (Germany) Light sheet microscopy	○	△	○	○			△
M***** (USA) High speed confocal microscopy	○	○	○	△		△	△
N***** (Swiss) HT (1st Gen)	○	○	△		○	△	△

04. Externally Validated Technology with robust IP protection

92 Granted and Pending Patents: Domestic & International Recognition



Patents related to core tech

R&D History	18 years
Publications	63
R&D Costs	KRW 19.8 bn.
domestic patents pending	16
domestic patents granted	27
international patents pending	22
international patents granted	27
Total patents	92

Awards and Recognitions

- IR52 Jang Young-shil Award**
Nov. '17 / Min. of Science and ICT
- Microscopy Innovation Award**
2019, 2025 / Microscopy Society of America
- Best Life Science Product Finalist**
2023 / SelectScience

Additional recognitions:

- Top 10 Mechanical Technologies(2016)
- PRISM Awards Finalist (2018)
- Awarded by the Min. of Science and ICT, South Korea (2021)
- Awarded by the Min. of SMEs and Startups, South Korea (2021)
- Awarded by "Korea Innovative Startup" (2022)

Chapter 2.

Expanding the applications of HT

01. Tomocube's Target Market

02. Opportunity # 1 Organoids

Opportunity # 2 In Vitro Fertilization

Opportunity # 3 Cell Therapies

Opportunity # 4 Drug Development

Opportunity # 5 Non-Bio Industrial Applications

01. Tomocube's Target Market

- 3D Biology & Regenerative Medicine Market Growth

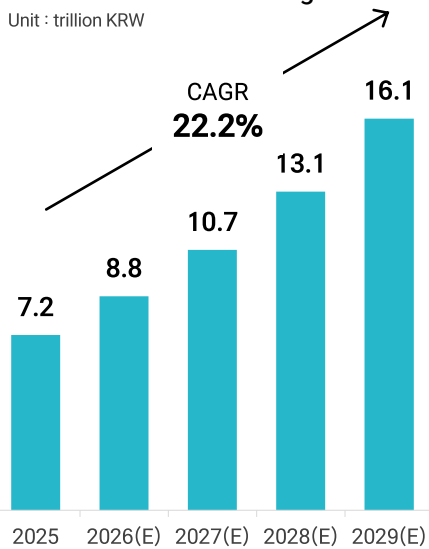
Market Size Projection

2027 Approx. 120 trillion KRW + α

Organoids

Organoid analysis in live conditions needed for toxicity evaluation and disease modeling

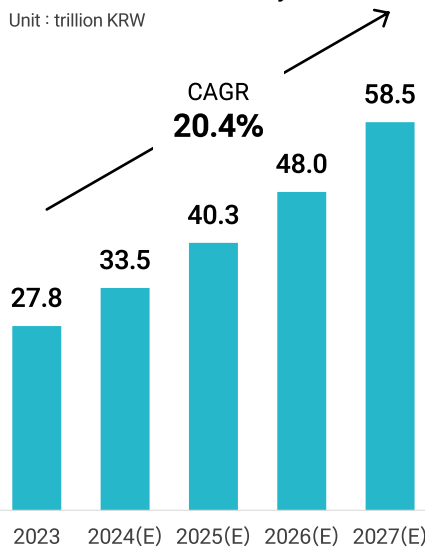
Unit : trillion KRW



In Vitro Fertilization (IVF)

Non-invasive selection technology needed to improve implantation success rates in embryo transfer

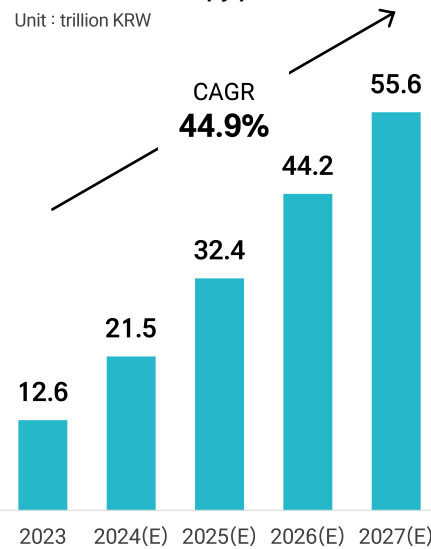
Unit : trillion KRW



Cell Therapy

Technology required for cell differentiation and quality control in cell therapy production

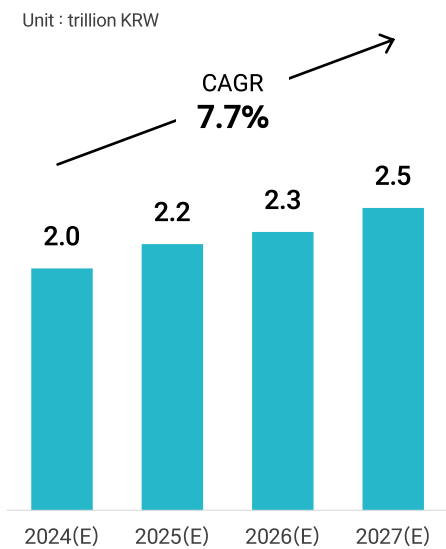
Unit : trillion KRW



High-Content Screening

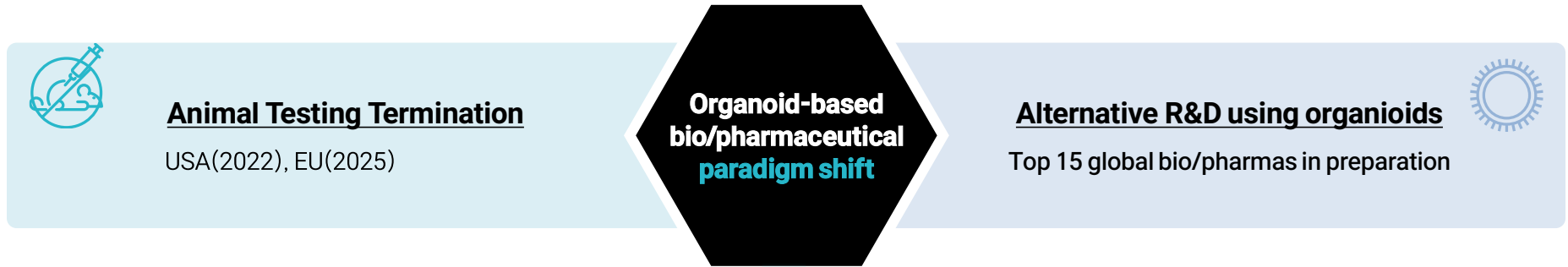
High-resolution imaging technology needed for screening drug candidates

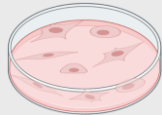
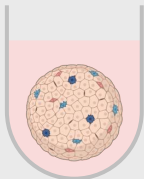
Unit : trillion KRW

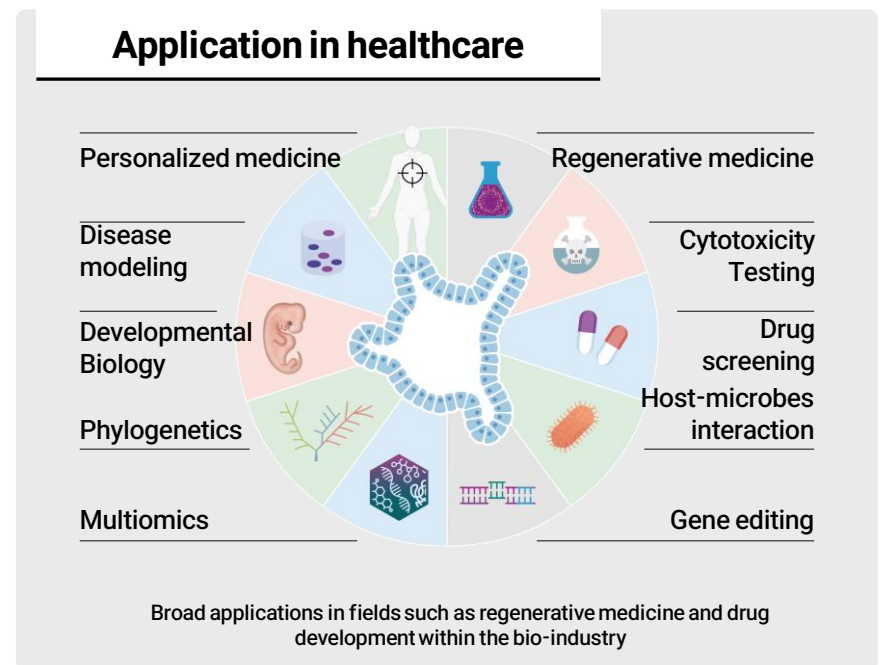


02. Expanding Applications of HT(1): Organoids*

- Organoids as a new model in Advanced Bioindustry



Cell vs. Organoid	
	
2D cell models	3D organoid cell models
	Category
Sole	Cell type
X	Intra-cell activities
Dish, plate, etc.	Growth platform
Preliminary R&D, Drug test	R&D purpose
	Multiple
	0
	3D Matrix
	Cancer, New Drug, Reg. Med.
Limited cell-to-cell interaction and lack of biomimetic environment in 2D models	Realistic simulation of the biomimetic environment and accurate cell-to-cell interaction in 3D models



* Organoid: tiny, self-organized three-dimensional tissue cultures that are derived from stem cells

02. Expanding Applications of HT(1): Organoids

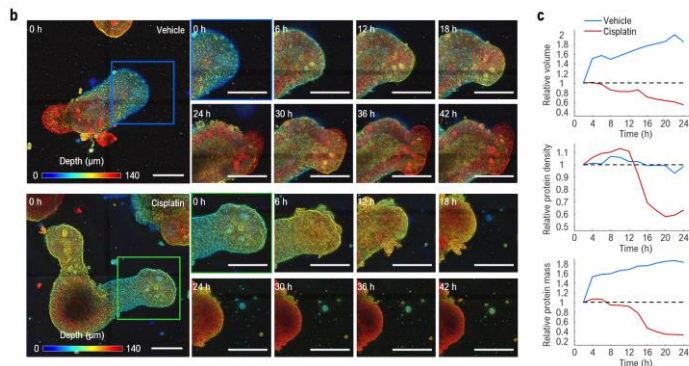
- Standardization of Organoid Analysis Using HT

Collaboration with Global Top Pharmas

Phenotypic Analysis of Organoid Cells Using AI-powered Holotomography

→ Signed a Joint Development Agreement with a Global Top-tier Pharmaceutical Company ('25.01)

Establishing a Standard Protocol for Organoid Analysis Using 3D Label-free Imaging and AI



Reference: M. J. Lee et al., Experimental & Molecular Medicine (2024)

Collaborating w/ US-KOR Gov't Agencies

Selected for bio material developments

→ 3D organoids imaging device for new drug safety verification

Leading organoids R&D and QA/QC standardization

Korea

USA



Joint R&D with NIH and its counterparts in Korea

Leading Standardization Efforts with Global Enterprises and Government Agencies

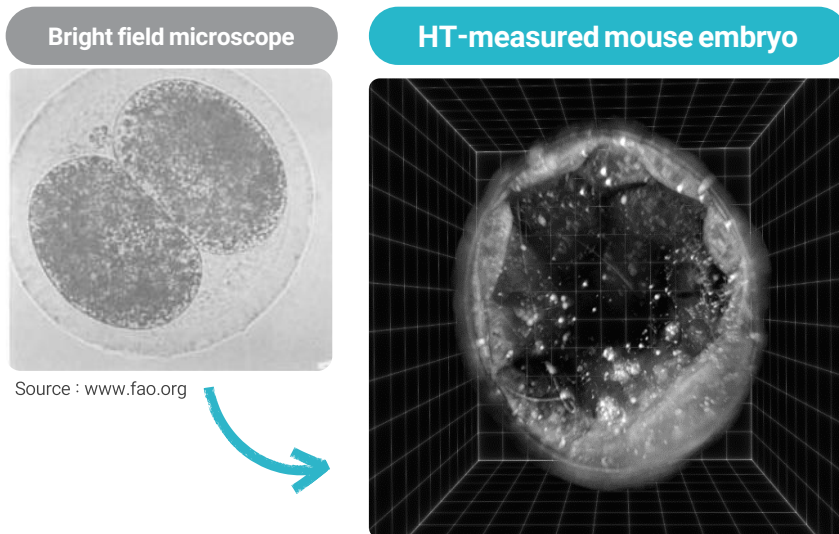
* NIH – National Institute of Health

02. Expanding Applications of HT(2): IVF

- 3D Label-Free HT Imaging and AI for Selecting High-Implantation Embryos

Conventional Unmet Needs

- Label-free imaging is essential for embryo selection processes
- Prohibited to dye or edit genes during embryo selection process
- Current BF microscopy: high intra- and inter-clinician variability



Unique Technology for Label-Free Selection
→ 3D Label-free Holotomography

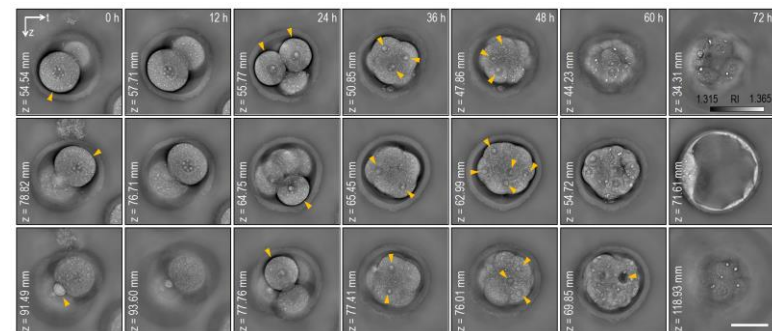
Synergies from strategic partnerships

Ovum selection using HT and Virtual Biomarkers

Big hospitals & institutions



Phototoxicity test for IRB approval using HT-X1 in human embryo studies

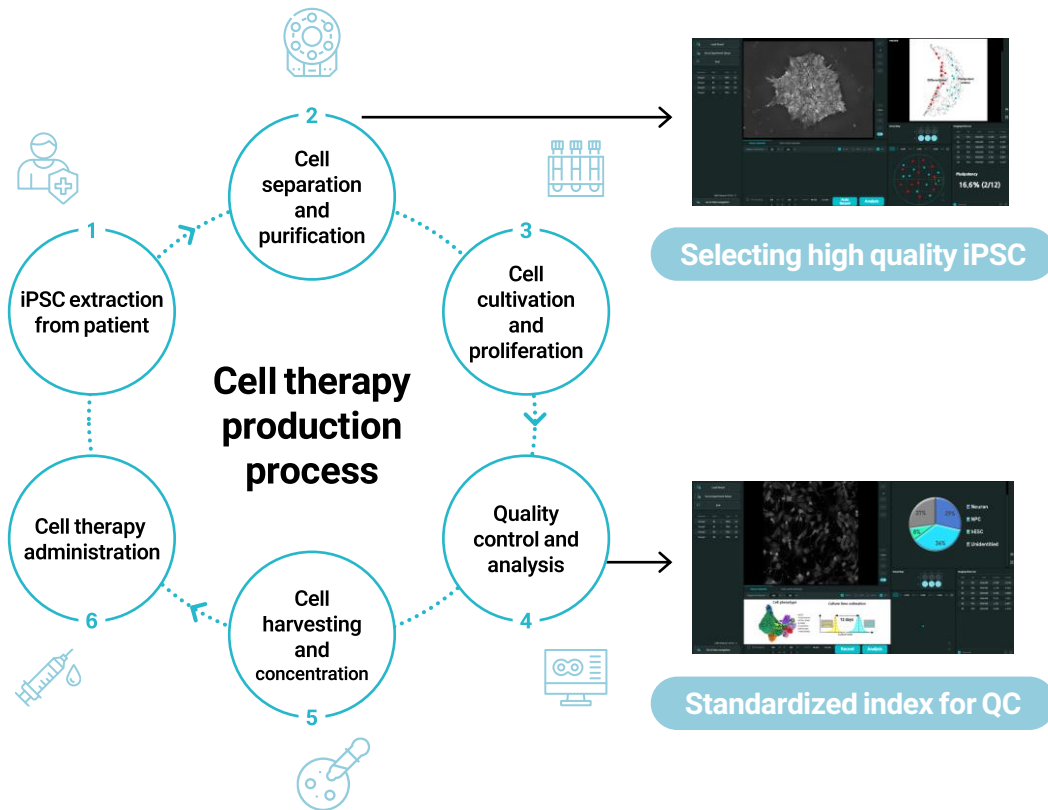


- 3D high-res. imaging from G1 phase to blastocyst (72 hours) confirmed
- AI-based embryo selection – 95% Accuracy (under review)

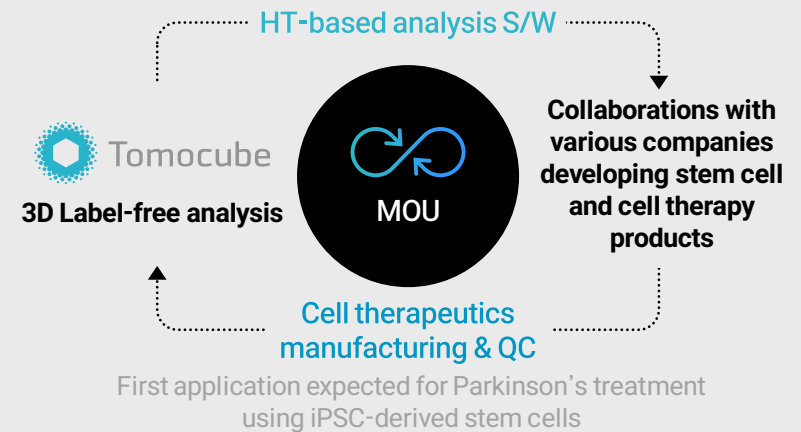
02. Expanding Applications of HT(3): Cell Therapy

- Transformative Solution for Quality Control in Cell Therapy Manufacturing

HT powered analysis S/W allowing Improvements in cell therapeutics manufacturing



Non-invasive QC Process for Cell Therapy



Potential for application across diverse cell therapies



02. Expanding Applications of HT(4): Drug Development

•• Application of HT in Phenotypic Drug Discovery (PDD)

Improving Phenotypic Drug Discovery with HT and AI

TDD Target-Based Drug Discovery

New discovery approaches necessary for incurable diseases

PDD Phenotypic Drug Discovery

- Real-time cell/tissue reaction observations → Can confirm efficacies
- Suitable for multi-targeted complex diseases
- Able to develop First-in-class drugs despite uncertain molecule target

New drug approval using PDD methods

Roche's SMA(Spinal Muscular Atrophy) therapy Evrysdi(risdiplam)

Entering new PDD markets using AI

feature extraction software → Applicable to drug screenings

As-is

Cell culture → **Cell Staining**

Image acquisition on High-content imaging system → Image Analysis and feature extraction

Imaging & Data analysis

Tomocube

Cell culture → **Imaging & Data analysis**

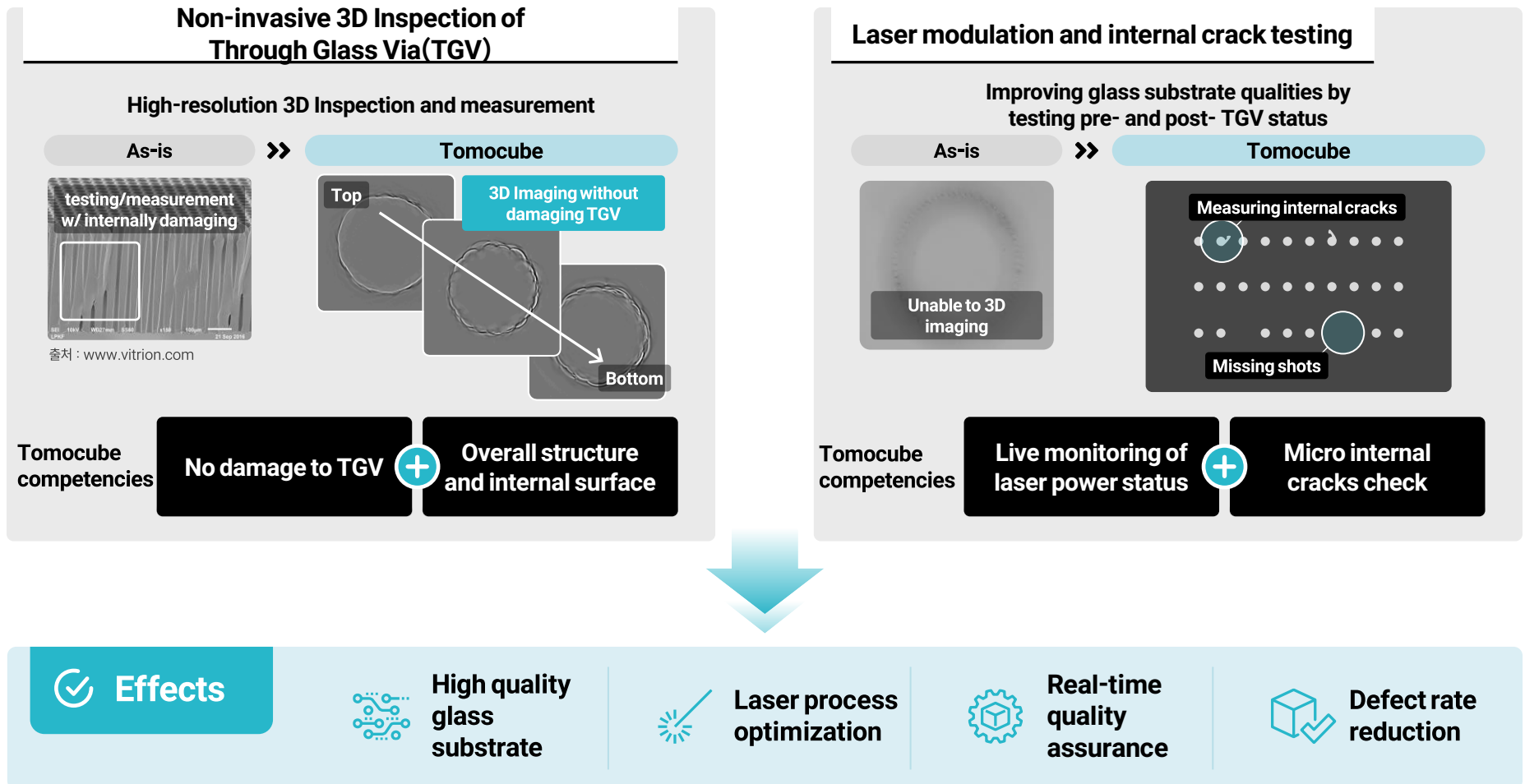
- Decreasing time & cost by skipping staining and washing
- Not damaging the cells using label-free methods
- Accurate data from S/W driven HT

AI model-based feature extractor will be updated on TomoAnalysis' next generation products

PDD(Phenotypic Drug Discovery): uses empirical, target-agnostic lead generation to identify pharmacologically active molecules and novel therapeutics which work through unprecedented drug mechanisms.
 TDD(Target-Based Drug Discovery): focused on a drug target, a gene product that provides a starting point for invention of a therapeutic which modulates its expression, function, or activity

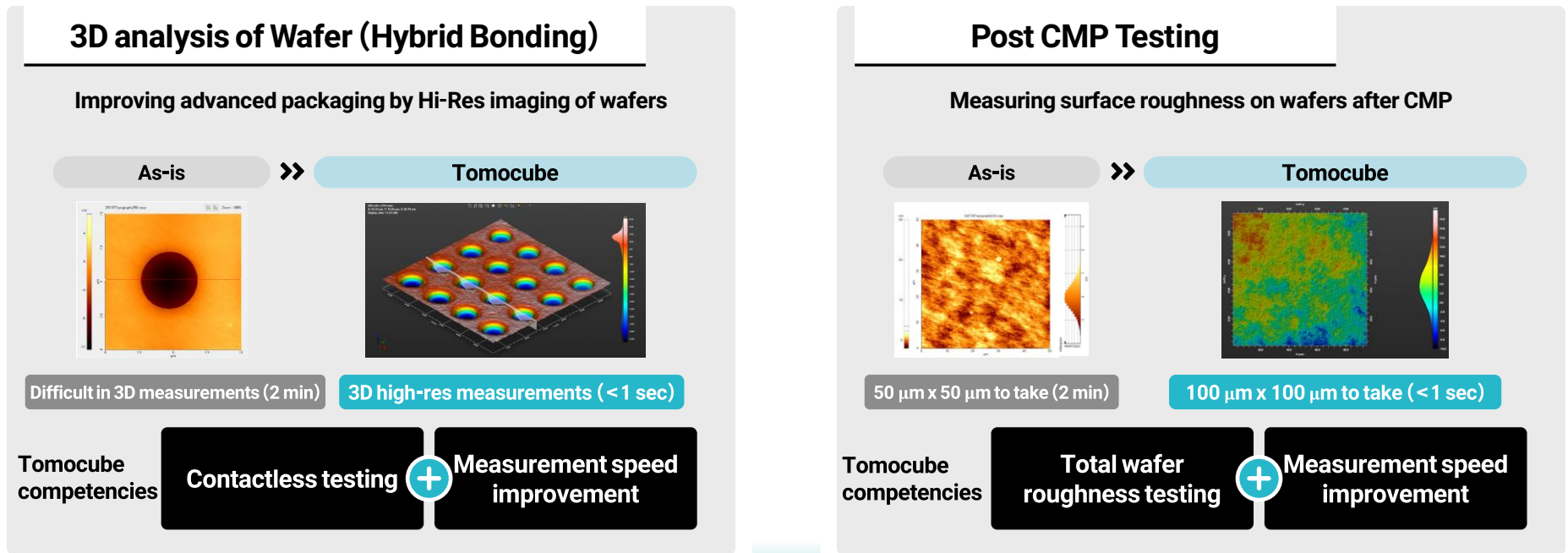
02. Expanding Applications of HT(5): Non-Bio Industrial Use

- Non-Destructive Testing: Key Challenges in Glass Substrate and TGV Manufacturing



02. Expanding Applications of HT(5): Non-Bio Industrial Use

- High-Throughput Metrology: Key Challenges in Hybrid Bonding and CMP Process Control



02. Expanding Applications of HT(5): Non-Bio Industrial Use

- Continuous R&D enabling the expansions beyond semiconductor and display sectors

New product launching



HT-R1 (Alpha) demo model

July '24 HT-R1 (Alpha) rev.3 dev. complete



Q3 '24 Aberration correction algorithm appl.



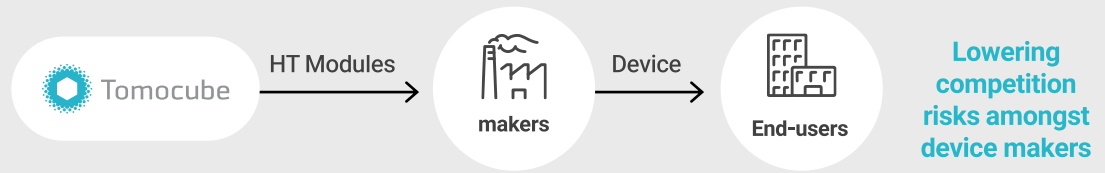
2025 Products for Hybrid Bonding testing



2026 HT-R1 launching

3D measurement modules & device

Early Providing modules to machinery/device makers



Key Industrial Applications

- OLED/microLED | 3D structural measurement and inspection of ultra-fine display components
- TGV | 3D structural analysis and crack detection of TGVs in glass substrates
- Wafer | Hybrid bonding inspection
- AR/VR | 3D structural analysis of Holographic Optical Elements

(HT-R1 module shipments to partner companies and clients to begin in 1H 2025)

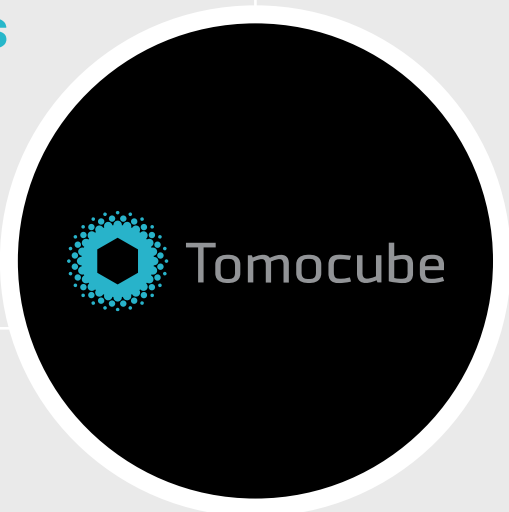
Chapter 3.

Investment Highlights

- 01. Tomocube's Key Success Factors
- 02. Proven Technology Excellence
- 03. Proven Commercial Viability
- 04. Global Expansion Strategy
- 05. Leading Localization in Bio Equipment Manufacturing
- 06. 4Q25 Financial Highlights

01. Tomocube's Success Factors

- Advanced Deep Tech Innovator in Bio Industry



First Player

World's First Commercialization of 2nd Gen Holotomography

Sufficient Capitals

Investment from Major Global Companies and VCs

KRW 44 bn. +
Capital raise

Global Player

Proven Market Penetration with Global References

73.1%
2025 Export Ratio

30+ markets
Distribution Networks

Rapid Growth

Revenue and profitability in high growth momentum

+90% yoy
Revenue
2024 – 2025

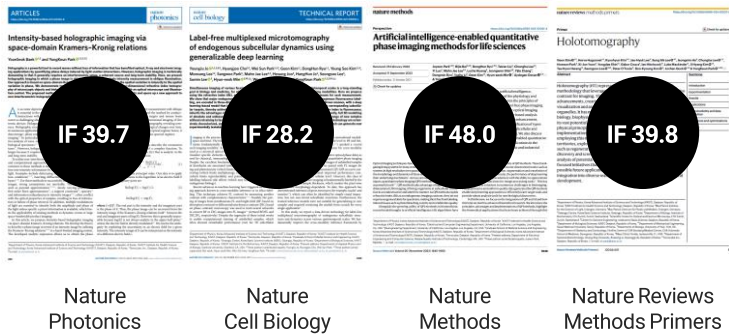
82.2%
(2022~2025)
Sales CAGR

02. Proven Technological Excellence

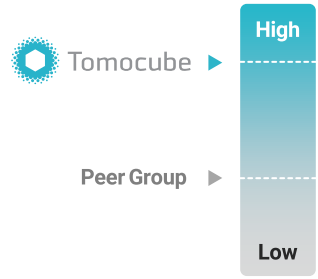
•• Holotomography Recognition in Global Market

Tomocube is leading global technology developments

Holotomography featured in top publications by industry

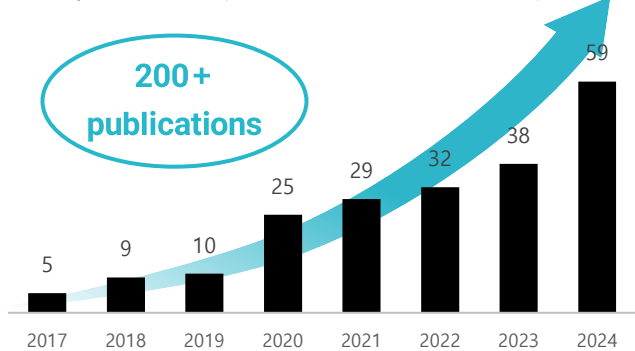


Competitive Impact Factor (IF)



Cumulated customer references to HT's market position

Steady increase in publications w/ Tomocube products



Main Research Areas



Driving new customer acquisition opportunities

Major International Collaborations and Conferences

Bioimaging, Organoids, Major Institutions (MIT, Harvard, Mayo Clinic, University of Tokyo, Tsinghua University)



Continuous exposure as the new bio/healthcare technology

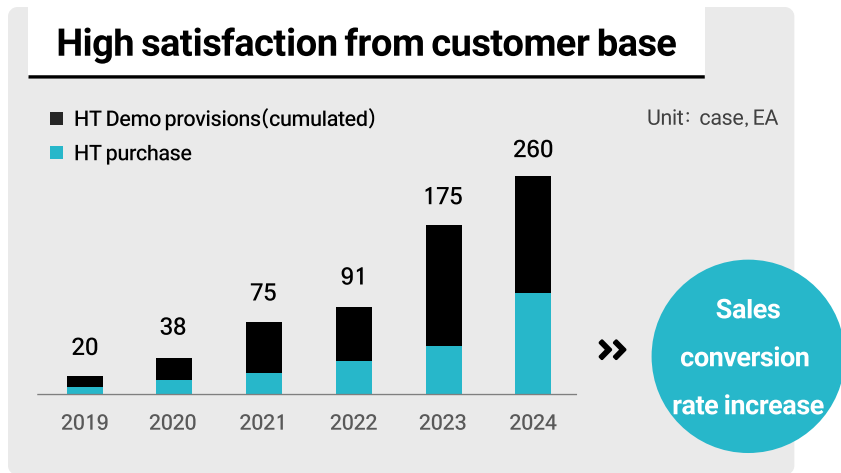


High Interest from Global Biopharma & Research Institutions

* : Impact Factor - a measure of the frequency with which the average article in a journal has been cited in a particular year. It is used to measure the importance or rank of a journal by calculating the times its articles are cited.

03. Proven Commercial Viability

- HT Expected to Show Explosive Growth as Best-in-Class Technology

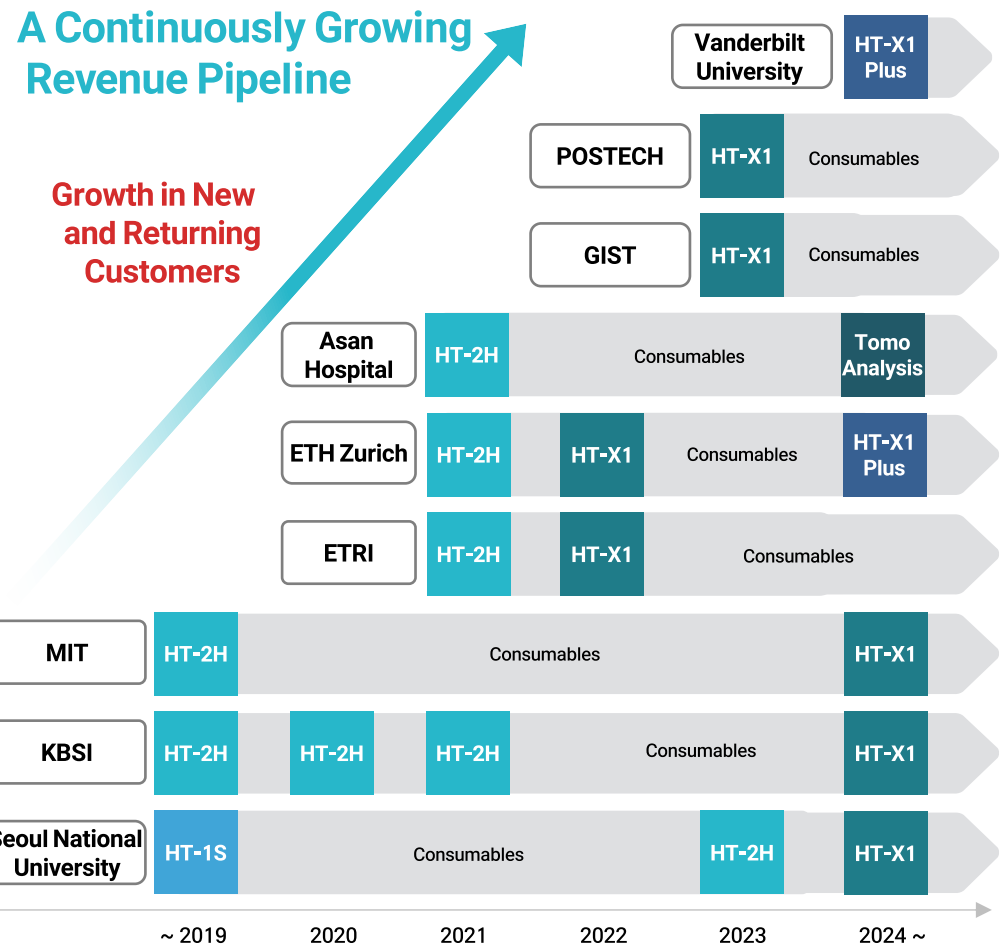


More global customer references

+ 100 Major Global Customers (Universities, Research Institutes, Corporations)

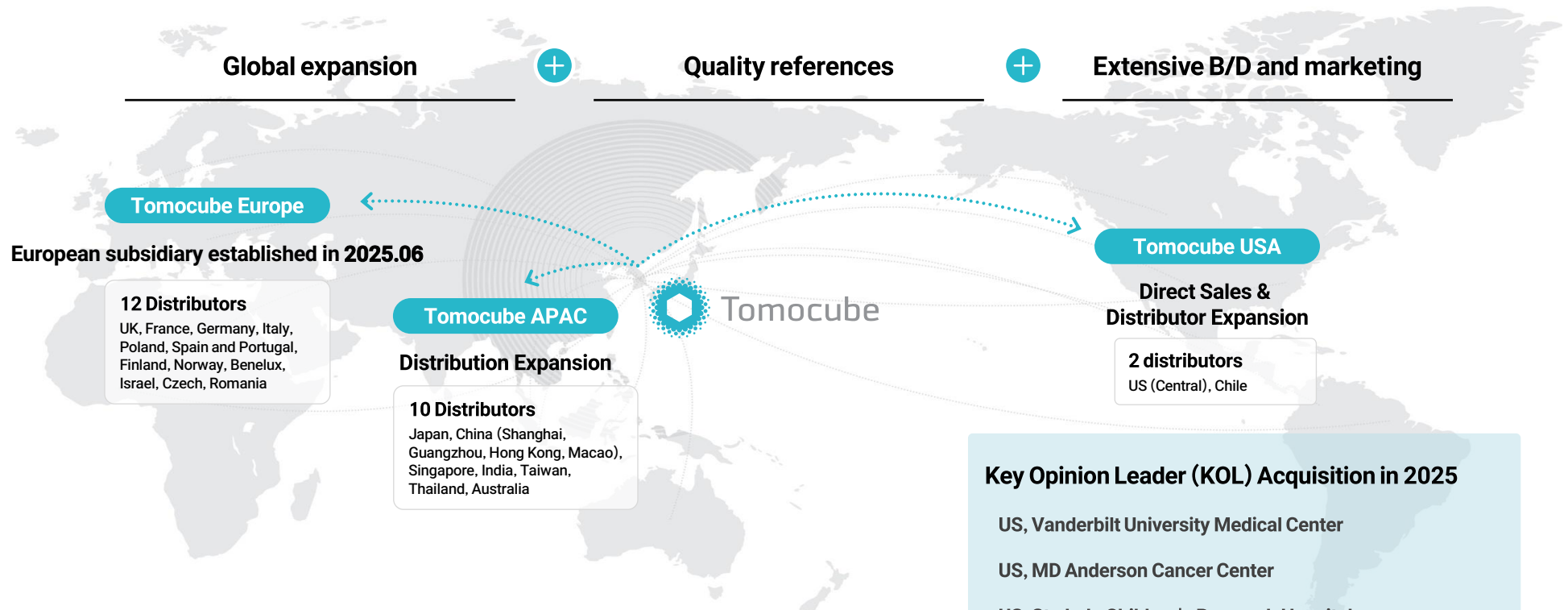
of Customers CAGR 27.3% (2019~2023)

Universities and Institutes		Industry
Johns Hopkins University	ETH Zurich	CJ
Seoul National University	MIT	LG Chem
OIST	US Air Force Lab	BAYER
CHA Hospital		



04. Global Expansion Strategy

- Expansion of Direct Sales & Distribution Networks Globally



Key Opinion Leader (KOL) Acquisition in 2025

- US, Vanderbilt University Medical Center
- US, MD Anderson Cancer Center
- US, St. Jude Children's Research Hospital
- US, Wake Forest Institute of Regenerative Medicine
- Switzerland, ETH Zurich (Returning Customers)

Acquisition of Global KOL Customers → Enhanced Technology and Product Promotion in Academia and Industry

Global Marketing and Business Development

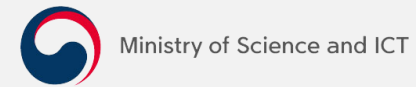
- Established Centers of Excellence
- Conference exhibition
- On-site demos
- Collaboration with distributors
- Social media / online PR



05. Leading Localization in Bio Equipment Manufacturing

- Direct Beneficiary of Government’s Bio Equipment Localization Policy

KR Government’s subsidy on domestic device R&D 5% or less for cell analysis equipment and other device dev.



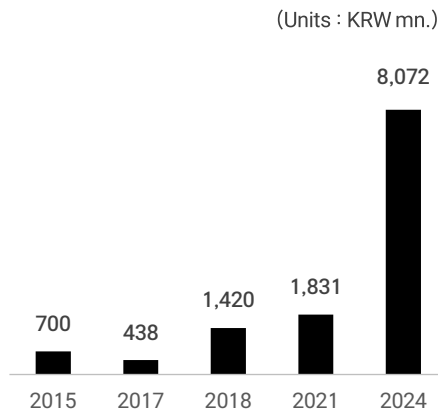
“20% or more to be domestically manufactured by 2027”

World-Class HT Technology

Tomocube’s cumulative public funding history

Over KRW 12.5 bn. public R&D and subsidies since 2015

- 3D holography microscope
- Domestic device competencies improvement
- Biomedical technology
- ⋮



Selected for PPS’s innovative device purchase

Public Procurement Service

“KRW 20.1 bn. worth purchase demand announcement”

Tomocube

HT-X1 5 units

Matching customers demands

- Seoul Natl. University
- Chonnam Natl. University
- Chungnam Natl. University
- Korea Basic Science Institute
- Korea Research Institute of Bioscience and Biotechnology

Completed Recognition of KRW 1.39 Billion Revenue for 2024

06. 4Q25 Financial Highlights

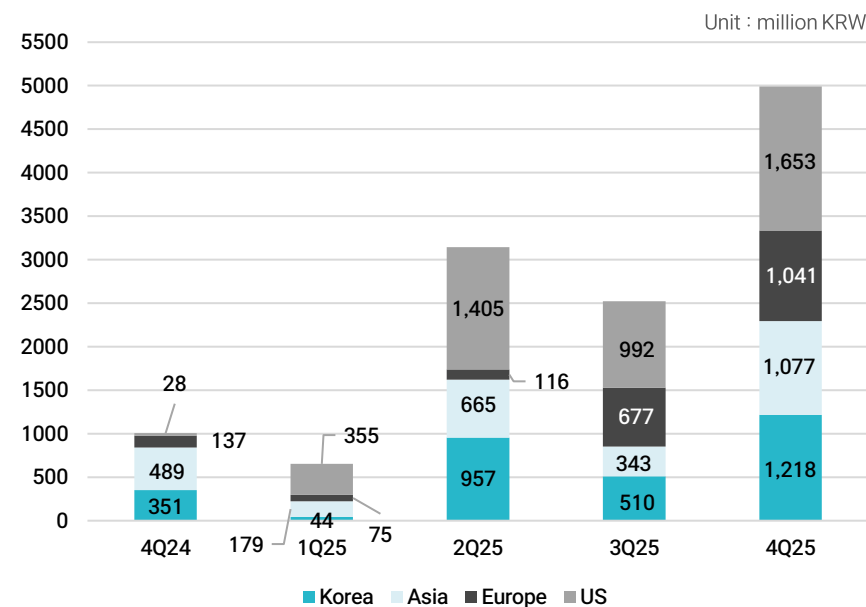
• Summary Income Statement

- 4Q revenue KRW 5.0bn (YoY +448.6%, QoQ +97.8%): driven by HT-X1 Plus and new revenue from non-bio and HT-X1 mini
- GPM 68.3% (YoY +4.0%p, QoQ +6.2%p): margin expansion on improved product mix and higher ASP
→ First quarterly operating profit achieved
- Export ratio 75.6%: balanced growth across the Americas, Europe, and APAC

Unit : million KRW

	4Q 25	4Q 24	YoY (%)	3Q 25	QoQ (%)
Sales	4,989	909	448.6	2,522	97.8
Cost of Goods Sold	1,584	286	453.3	955	65.8
Gross Profit	3,405	623	446.4	1,567	117.3
GPM (%)	68.3	64.3		62.1	
SG&A	3,007	3,337	-9.9	3,396	-11.5
Operating Profit	398	-2,714	Turned to profit	-1,829	Turned to profit
Net Profit (Loss)	643	-2,728	Turned to profit	-1,537	Turned to profit

Notes: Based on audited K-IFRS financial statements



06. 4Q25 Financial Highlights

•• Financial Statements

Statement of Financial Position

Unit : million KRW

Category	2022	2023	2024	2025
Current Assets	22,126	15,952	40,062	35,721
Non-Current Assets	2,930	3,823	3,548	5,791
Total Assets	25,055	19,775	43,610	41,512
Current Liabilities	52,198	1,776	1,328	1,543
Non-Current Liabilities	692	291	292	1,175
Total Liabilities	52,890	2,067	1,620	2,718
Capital Stock	1,100	2,612	6,523	6,661
Capital Surplus	-	66,720	97,882	101,036
Other Capital Items	4,713	5,610	3,069	1,356
Accumulated Other Comprehensive Income	21	-16	36	72
Retained Earnings (Deficit)	(33,668)	(57,218)	(65,520)	(70,331)
Total Equity	(27,834)	17,708	41,990	38,794

Notes : Based on audited K-IFRS financial statements.

Income Statement

Unit : million KRW

Category	2022	2023	2024	2025
Sales	1,871	3,747	5,939	11,307
Cost of Goods Sold	928	1,565	2,349	3,864
Gross Profit	943	2,182	3,590	7,443
Selling & Admin Expenses	7,311	8,915	12,370	13,012
Operating Profit	(6,369)	(6,733)	(8,780)	(5,569)
Financial Gains (Losses)	35,579	(16,889)	300	718
Other Gains (Losses)	126	71	177	41
Profit (Loss) Before Tax	29,336	(23,550)	(8,302)	(4,810)
Income Tax Expense	-	-	-	-
Net Profit (Loss)	29,336	(23,550)	(8,302)	(4,810)

Notes : Based on audited K-IFRS financial statements.

Appendix

01. Board of Directors

02. Key Personnel

01. Board of Directors

- Independent, professional board with a focus on accountability



YongKeun Park **Chairman of the Board, CEO**

Education Ph.D. in Health Science and Technology, Harvard-MIT

- Career**
- Co-founder & CEO, Tomocube
 - Professor, KAIST



Sang-II Park **Outside Director**

Education Ph.D., Stanford University

- Career**
- CEO, Park Systems
 - Founder & CEO, Park Scientific Instrument



Byung-Kyun Ham **Outside Director**

Education J.D., Seton Hall University School of Law

- Career**
- Dentons Lee Senior Attorney
 - Law Firm Jipyong Senior Foreign Lawyer
 - General Counsel, Seegene
 - attorney for the U.S. Department of Health and Human Services



Sang-Hoon Cha **Outside Director**

Education Ph.D., Seoul National University, Medicine

- Career**
- Multipurpose Synchrotron Radiation Construction Project Committee
 - Central Pharmaceutical Affairs Council
 - Professor, Department of Medicine, Chungbuk National University College of Medicine
 - President, Osong Foundation for Advanced Medical Industry
 - President, Korea Drug Development Fund



Sung-Ho Ko **Inside Director, COO**

Education M.S. in Industrial Engineering, KAIST

- Career**
- General Manager, Lutronic
 - Country Manager, Samsung Medison



Young-seok Shin **Auditor**

Education M.S., Beijing University, MBA

- Career**
- CFO, ASTech Co., Ltd.
 - Director, Samjong KPMG LLC

02. Senior Executives

- More than 10 years of experienced management and development personnel in the relevant field



YongKeun Park **CEO**

Education Ph.D. in Health Science and Technology, Harvard-MIT

- Career**
- Co-founder & CEO, Tomocube
 - Professor, KAIST



Sung-Ho Ko **COO**

Education M.S. in Industrial Engineering, KAIST

- Career**
- General Manager, Lutronic
 - Country Manager, Samsung Medison
 - Quality Control, Daewoo Electronics



Taehong Kim **SVP of Precision Division**

Education B.S. in Electrical and Electronic Engineering, KAIST

- Career**
- Software Team Lead, Wiseplanet
 - Software Engineer, Photon Dynamics Korea
 - Acron, S/W team



Sumin Lee **SVP of Life Science Division**

Education Ph.D. in Life Sciences, POSTECH

- Career**
- R&D Project Planning, National Forensic Service
 - Postdoctoral Researcher, POSTECH



Wan-Sung Ku **CFO&CSO**

Education Ph.D. (ABD) in Pharmacy, Sungkyunkwan University

- Career**
- CFO, Genius
 - Analyst, NH Investment & Securities
 - Research Planning, Dong-A Socio Holdings

